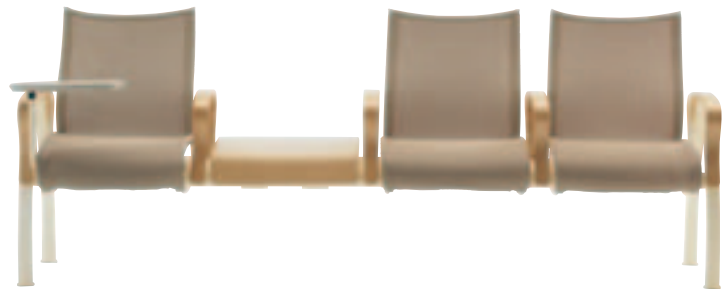


Cura™

PATIENT + TANDEM + BEAM SEATING AND TABLES





Design: Michael Shields
Design Origin: United States



H316MU Highback Patient Sledbase
 Cream Frame
 Upholstered Seat / Moss CuraNet Back
 Optional Laminate Armcaps



H305MM Midback Patient Sledbase
 Sage Frame / Sage Plastisol Armcap
 Moss CuraNet Seat and Back



H305-HS Hideaway Ottoman
 Cream Frame / Upholstered
 (CuraNet not available)

Design Awards

- 2005 ADEX Platinum Award
- 2004 Facility Care Magazine Top Product
- 2004 Design Journal Best of Show

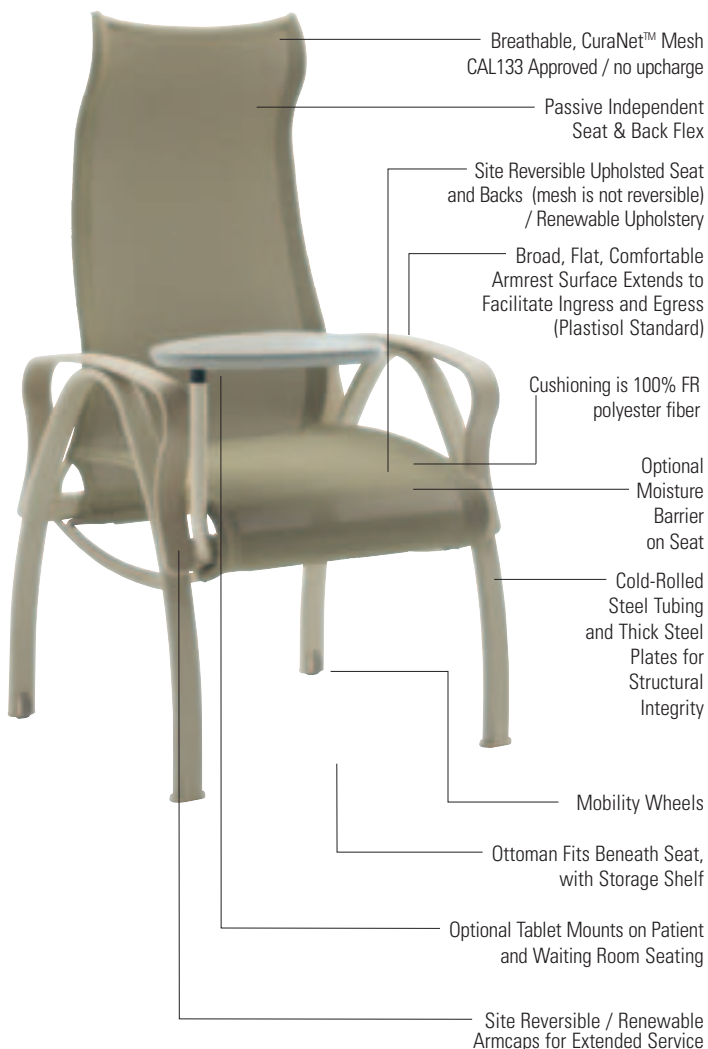
Brayton's Highest Functioning Patient Room to Waiting Room Design

Statement of Line

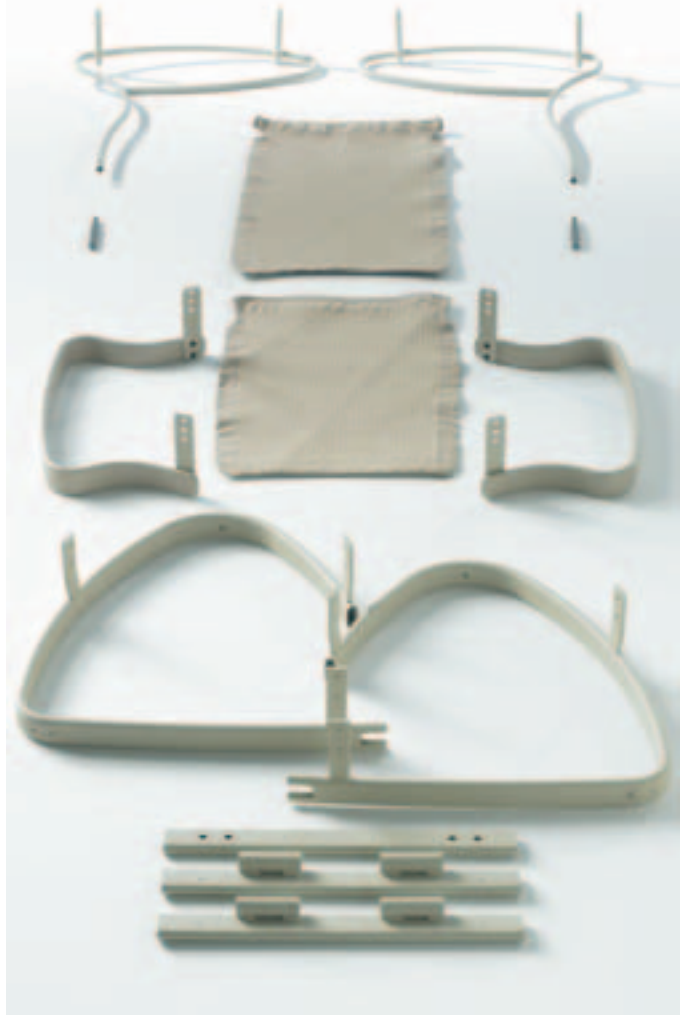
- Patient Room
- Metal Tandem
- Metal Beam
- Upholstered Tandem
- Upholstered Beam
- Occasional Tables
- Benches
- Ottoman

Features + Benefits

- Warmth of Wood Combined with the Durability of Metal
- Breathable, CuraNet™ Mesh for comfort
- Upholstered / Closed Arm Beam
- Tablets on Patient Seating
- Mobility Wheels on Patient Seating
- Wood Benches
- Select from CuraNet or Upholstered Seat and Back



Contributes to Patient and Environmental Wellness



Not only does Cura provide high-performance, it is designed with the environment in mind. The Cura healthcare collection utilizes no urethane foam cushioning materials. Its modular design allows the entire chair to be reduced to single material components for ease of recycling. Cura's construction incorporates environmentally-sound materials such as recycled steel, replaceable parts, universal armcaps, and a powdercoat finish that meets the EPA's strictest clean Air Act Standards. CuraNet™ is a 100% anti-microbial, stain-resistant polyester with an engineered seating suspension robotically-knitted using yarns combined with polyester elastomeric suspension filament for durability and comfort. Cura frames can be refurbished or reduced to single material components for recycling with simple hand tools.



H320-3UAUU Three Seat Tandem / Upholstered Arm Panels / Sage Frame / Optional Wood Armcaps



H300TB3220 Table Bench / Sage Frame / Wood Top



H300UU Midback Patient Chair / Upholstered Seat and Back / Cream Frame
Optional Wood Armcaps



H301MM Highback Patient Chair / Sage Frame
Moss CuraNet Seat and Back / Optional Tablet
Standard Plastisol Armcaps



H320-2MM Two Seat Tandem with **H30-TER1** End Run Table / Wood Top
Cream Frame / CuraNet Tan Seat and Back / Optional Wood Armcaps

Standard Features and Options

- Sledbase and Four Leg Models
- CuraNet and Upholstered Versions
- Coordinating Ottomans, Benches and Tables
- Closed and Open Arm Models
- Optional Moisture Barrier
- Optional Pivoting Tablet - 3 Colors
- CAL 133 Option (Standard on CuraNet)
- Three Armcap Options - Plastisol (standard), Laminate or Wood
- Six CuraNet Colors
- Five Frame Powdercoat Finishes



H323-4TMM Three Seat Beam
with Intermediate Table



H323-4TMM Three Seat Beam with Intermediate Wood Table /
Cream Frame / Tan CuraNet Seat and Back / Optional Tablet /
Optional Wood Armcaps



H320EMM Wide Midback Patient Chair
Cream Frame / Tan CuraNet Seat and Back /
Optional Wood Armcaps



H323-2EMM Wide Two Seat Beam / Black Frame / Black CuraNet Seat and Back
Optional Wood Armcaps



H300TB2022 Table Bench / Cream Frame / Upholstered
(CuraNet not available)



H323-2EMM Two Seat Beam Wide

CURA PATIENT / 21" width



H305MM
H305UU
H315MU

Midback Patient Sledbase
Overall: 24.5D 25W 40.5H
Inside: 19D 21W 22H
Seat: 18.5H Arm: 25.75H



H306MM
H306UU
H316MU

Highback Patient Sledbase
Overall: 24.5D 25W 48H
Inside: 19D 21W 29H
Seat: 18.5H Arm: 25.75H



H300MM
H300UU
H310MU

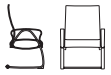
Midback Patient 4 Leg
Overall: 24.5D 25W 40.5H
Inside: 19D 21W 22H
Seat: 18.5H Arm: 25.75H



H301MM
H301UU
H311MU

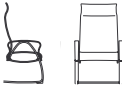
Highback Patient 4 Leg
Overall: 24.5D 25W 48H
Inside: 19D 21W 29H
Seat 18.5H Arm 25.75H

CURA PATIENT / 24" width



H305EMM
H305EUU
H315EMU

Midback Patient Sledbase
Overall: 24.5D 28W 40.5H
Inside: 19D 24W 22H
Seat 18.5H Arm 25.75H



H306EMM
H306EUU
H316EMU

Highback Patient Sledbase
Overall: 24.5D 28W 48H
Inside: 19D 24W 29H
Seat 18.5H Arm 25.75H



H300EMM
H300EUU
H310EMU

Midback Patient 4 Leg
Overall: 24.5D 28W 40.5H
Inside: 19D 24W 22H
Seat 18.5H Arm 25.75H



H301EMM
H301EUU
H311EMU

Highback Patient 4 Leg
Overall: 24.5D 28W 48H
Inside: 19D 24W 29H
Seat 18.5H Arm 25.75H

CURA TANDEM OPEN / 21" and 24" widths



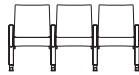
H320MM
H320UU
H330MU

Tandem Chair / 21"W
Overall: 24.5D 25W 37H
Inside: 19D 21W 18H
Seat 18.5H Arm 25.75H



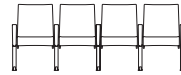
H320-2MM
H320-2UU
H330-2MU

Two Seat Tandem / 21"W
Overall: 24.5D 48.75W 37H
Inside: 19D 21W 18H
Seat 18.5H Arm 25.75H



H320-3MM
H320-3UU
H330-3MU

Three Seat Tandem / 21"W
Overall: 24.5D 72W 37H
Inside: 19D 21W 18H
Seat 18.5H Arm 25.75H



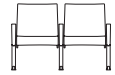
H320-4MM
H320-4UU
H330-4MU

Four Seat Tandem / 21"W
Overall: 24.5D 95.5W 37H
Inside: 19D 21W 18H
Seat 18.5H Arm 25.75H



H320EMM
H320EUU
H330EMU

Tandem Chair / 24"W
Overall: 24.5D 28W 37H
Inside: 19D 24W 18H
Seat 18.5H Arm 25.75H



H320-2EMM
H320-2EUU
H330-2EMU

Two Seat Tandem / 24"W
Overall: 24.5D 54.75W 37H
Inside: 19D 24W 18H
Seat 18.5H Arm 25.75H

CURA TANDEM CLOSED / 21" and 24" widths



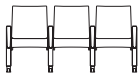
H320UAUU

Chair / Upholstered Arm
Overall: 24.5D 25W 37H
Inside: 19D 21W 18H
Seat 18.5H Arm 25.75H



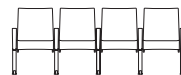
H320-2UAUU

Two Seat Tandem / Uph Arm
Overall: 24.5D 48.75W 37H
Inside: 19D 21W 18H
Seat 18.5H Arm 25.75H



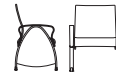
H320-3UAUU

Three Seat Tandem / Uph Arm
Overall: 24.5D 72W 37H
Inside: 19D 21W 18H
Seat 18.5H Arm 25.75H



H320-4UAUU

Four Seat Tandem / Uph Arm
Overall: 24.5D 95.5W 37H
Inside: 19D 21W 18H
Seat 18.5H Arm 25.75H



H320UAUU

Tandem Chair / 24"W
Overall: 24.5D 28W 37H
Inside: 19D 24W 18H
Seat 18.5H Arm 25.75H

CURA BEAM OPEN / 21" and 24" widths



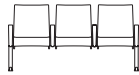
H323-2MM
H323-2UU
H333-2MU

Two Seat Beam / 21"W
Overall: 24.5D 48.75W 37H
Inside: 19D 21W 18H
Seat 18.5H Arm 25.75H



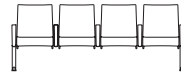
H323-2EMM
H323-2EUU
H333-2EMU

Two Seat Beam / 24"W
Overall: 24.5D 54.75W 37H
Inside: 19D 24W 18H
Seat 18.5H Arm 25.75H



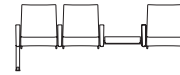
H323-3MM
H323-3UU
H333-3MU

Three Seat Beam / 21"W
Overall: 24.5D 72W 37H
Inside: 19D 21W 18H
Seat 18.5H Arm 25.75H



H323-4MM
H323-4UU
H333-4MU

Four Seat Beam / 21"W
Overall: 24.5D 95.5W 37H
Inside: 19D 21W 18H
Seat 18.5H Arm 25.75H



H323-4TMM
H323-4TUU
H333-4TMU

Three Seat Beam with Intermediate Table / 21"W
Overall: 24.5D 95.5W 37H
Inside: 19D 21W 18H
Seat 18.5H Arm 25.75H

CURA BEAM CLOSED / 21" and 24" widths



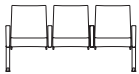
H323-2UAUU

Two Seat Beam / 21"W
Overall: 24.5D 48.75W 37H
Inside: 19D 21W 18H
Seat 18.5H Arm 25.75H



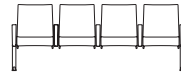
H323-2UAUU

Two Seat Beam / 24"W
Overall: 24.5D 54.75W 37H
Inside: 19D 24W 18H
Seat 18.5H Arm 25.75H



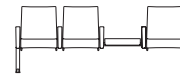
H323-3UAUU

Three Seat Beam / 21"W
Overall: 24.5D 72W 37H
Inside: 19D 21W 18H
Seat 18.5H Arm 25.75H



H323-4UAUU

Four Seat Beam / 21"W
Overall: 24.5D 95.5W 37H
Inside: 19D 21W 18H
Seat 18.5H Arm 25.75H



H323-4TUAUU

Three Seat Beam with Intermediate Table / 21"W
Overall: 24.5D 95.5W 37H
Inside: 19D 21W 18H
Seat 18.5H Arm 25.75H

MM = Mesh Back / Mesh Seat

UU = Upholstered Back / Upholstered Seat

MU = Mesh Back / Upholstered Seat



H300TB2020
Table / Bench
Overall: 19D 20W 18H



H300TB2022
Table / Bench
Overall: 19D 20W 22H



H300TB3220
Table / Bench
Overall: 19D 32W 18H



H30-T45G
Tandem Wedge
Ganging Table
Overall: 21D 28W 18.5H



H30-TER1
Tandem End Run Table
Overall: 21D 20W 18.5H



H30-TER2
Tandem Corner Ganging
Overall: 21D 28W 18.5H



H30-TSG1
Tandem Straight
Ganging Table
Overall: 21D 20W 18.5H



H305-HS
Hideaway Ottoman
Overall: 19D 16W 12.5H



Swivel Tablet / optional
Overall: 15.5D 10.5W

POWDERCOAT FRAME COLORS



Black



Cream



Graphite



Sage

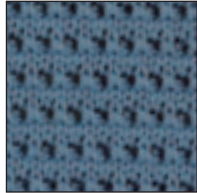


Wheat

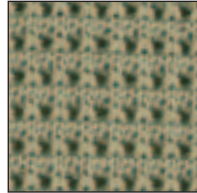
CURANET™ MESH COLORS



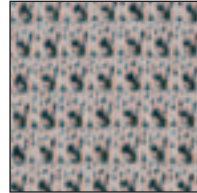
Black



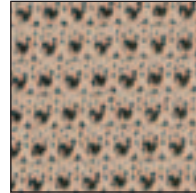
Blue



Moss



Silver Gray



Tan



Jute

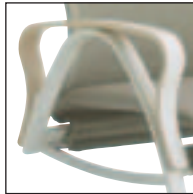
OPTIONS / STANDARD FEATURES



Optional Tablet
(Cashmere, Cloud, Black)



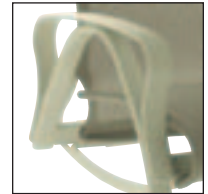
Wheels Standard on
Patient Chairs



Optional Laminate
Armcap



Optional Wood
Armcap



Standard Plastisol
Armcap

Actual colors will vary due to the printing process. Request actual sample for color accuracy.

Upholstery:

- CuraNet Seat and Back
- Upholstered Seat and Back
- Upholstered Seat and Curanet Back

Armcaps:

- Plastisol - 1/8" thick coating of integral PVC which is scratch resistant and warm to the touch. Specify color: Black, Wheat, Graphite, Sage, or Cream.
- Wood - 1/2" thick Maple veneer (laminated), 20 standard wood finishes
- Laminate - High pressure laminate. Specify standard Steelcase WilsonArt colors. Refer to Brayton Healthcare Master Price List.

CuraNet Upholstery:

- 100% polyester yarn with an integrated synthetic elastomer suspension system with anti-microbial and stain resistance.
- Specify color: Black, Blue, Moss, Silver Gray, Tan, or Jute.
- CAL 133 compliant standard.
- Optional moisture barrier. Seat only.

Wheels:

- Rear mobility wheels are standard on all patient seating models. Tread is soft, non-marring, and gray in color.

Frame:

- Heavy gauge steel frame with solid steel rods for added strength.
- Powdercoat finish. Specify color: Black, Cream, Graphite, Sage, or Wheat.

Table/Bench:

- Laminated maple wood top.
- Laminate - Specify standard Steelcase WilsonArt colors. Refer to Brayton Healthcare Master Price List.
- Upholstered - Specify textile.

Tablet:

- Optional Tablet available in Film Wrapped Resin. Specify resin color: Cashmere, Cloud or Black.

CuraNet Test Results		Fabric Content	100% Polyester	AATCC 30 - Aspergillus niger	> 15mm growth-free zone. 100% surface inhibition.
Tests	Results			**Source: Thomson Research	
Stain Resistance	After 5 Min. After 24 Hrs.	Tensile Strength ASTM D 5034	281 lbs. Warp 265 lbs. Fill	Hydrostatic Resistance AATCC 127	N/A
Blood (Synthetic)	5 5	Tear Strength ASTM D 2261	41.74 lbs. Warp 62.48 lbs. Fill	Abrasion Resistance ASTM D 4157	Heavy Duty Uph. (Over 100,000 Double Rubs with no appreciable wear or breakage)
Urine (Synthetic)	5 5	Yarn Slippage ASTM D 4034	36.34 lbs. Warp 36.05 lbs. Fill	Resistance to Pilling ASTM D 3511	Class 5.0 No Pilling or Fuzzing
Iodine	5 4.5	Fire Resist UFAC Classification	Class 1 Does not ignite	Color Fastness AATCC 8	Wet Crocking - Class 4 Dry Crocking - Class 4.5
Suntan Lotion	5 5	NFPA 260	Pass		
Ketchup	5 4.5	CAL 117, Sec. E	Pass		
Black Coffee	5 5	Bacterial and Fungal Resistance*			
Milk	5 5	AATCC 147 - Staphylococcus aureus	> 15mm growth-free zone. 100% contact inhibition.		
Cola	5 5	AATCC 147 - Klebsiella pneumoniae	4mm growth-free zone. 100% contact inhibition.		

Results based on cleaning protocol. Ratings based on AATCC Gray Scale for Staining: 5 = No stain, not objectionable in any way, 4 = Slightly stained, visible under close observation but not visible to casual observer, 3 = Noticeably stained and visible to a casual observer, 2 = Considerably stained, clearly visible and probably objectionable, 1 = Heavily stained, clearly visible and definitely objectionable.

continued next column >