

Worknest

Design: Ronan & Erwan Bouroullec



vitra.

Worknest

Experts are unanimous: The Open Space Office meets the requirements of modern teamwork the best. However, it often neglects the need for individuals to have their own space. But where does “privacy” start in the office? It begins with the recognition of the basic human need to have privacy, which is good for the concentration and inspiration of individuals. That is the reason why we consciously chose the protective image of a nest for the design of Worknest.

Comfort

Worknest, the new office swivel chair by Vitra and Ronan and Erwan Bouroullec, exudes cosiness. An office furnished with several Worknest chairs seems optically calm and harmonic because of the form and colour of Worknest. The encompassing form of the seat bowl shows comfort so that employees have a feeling of wellbeing and are motivated.

Colours

Worknest has an innovative way with colours and offers a variety of colour combinations. Thus every chair becomes a collage of warm shades of colours that complement each other. Together with its shape and the pleasant haptics of its knitted material it creates the comfortable and private character of Worknest.

Technology

Worknest hides its ergonomic technology: Even the integrated armrests are completely knitted whilst its height adjustment remains intact due to the stretchiness of the fabric. The synchronised mechanism automatically adjusts to the user’s weight, provides harmonic movement and all adjustments may be carried out in a seating position. Thus Worknest offers an ergonomic quality which you hardly expect because of its non-technical appearance.



Erwan & Ronan Bouroullec

Brothers Ronan (born 1971) and Erwan (born 1976) Bouroullec live and work in Paris. Both designers have developed products for Vitra like Joyn, Alcove Sofa, Self, Metal Side Table, Box and Algues.



Net 'n' Nest

The Open Space Office is most suitable for the quick exchange, for communication within the team – Netting. In order to provide the employee with the best opportunity to do his job as best he can he needs to have privacy for concentration, for informal conversations or confidential telephone conversations – Nesting. Netting and Nesting. Net 'n' Nest. Worknest provides acceptance of such working procedures due to its cosy character and gives the individual a feeling of being valued.





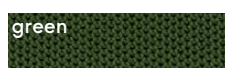
Mix & Match



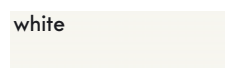
The designers have matched the 8 different material colours and the 5 colours of the armrest frame of Worknest perfectly. Mix & Match means that all the colours may be combined

on the chair but also that many completely different Worknest chairs may be used alongside each other and together still match.

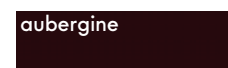
NestKnit colour



Armrest frame colour

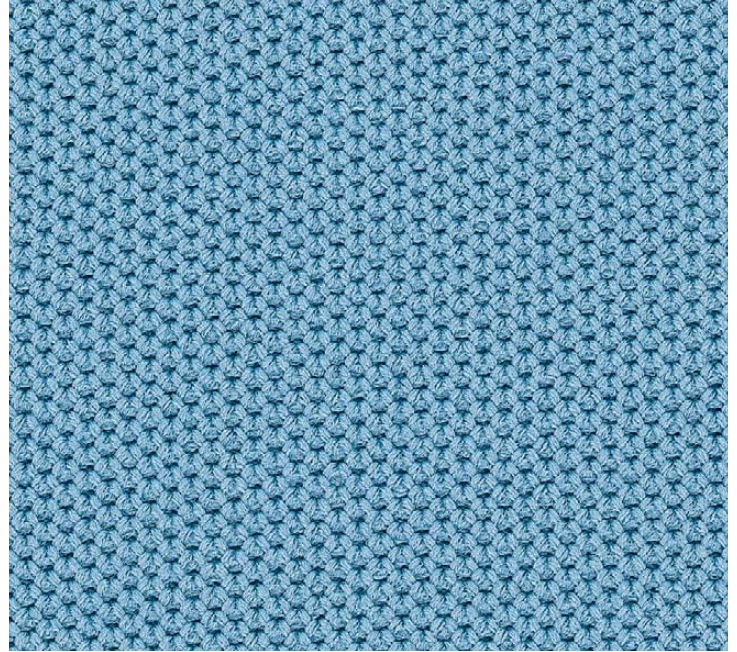


Armrest cover colour



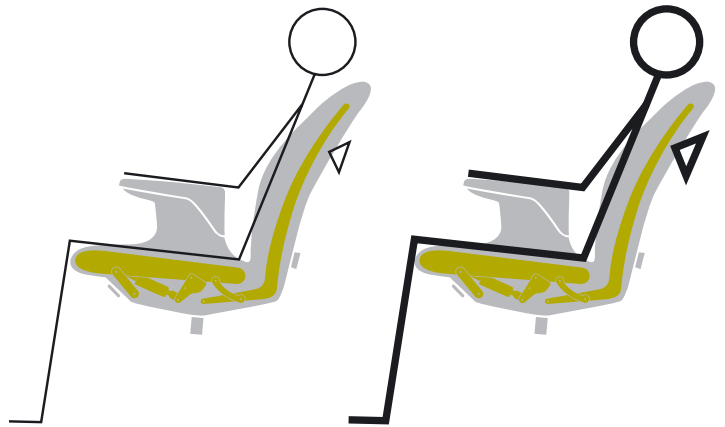
NestKnit

Vitra has been looking at the development of knitted materials, the so-called “knitted fabrics”, for many years and uses them for certain functions. Knitted fabrics can be stretched extensively and they can be used three-dimensionally for a shape and be attached seamlessly. With the use of various yarns it is possible to knit sections with varying density. For Worknest the knitted fabrics are used for many reasons: together with the comfortable upholstery it provides high seating comfort and the elastic covering of the armrests would not have been possible without the know-how of Vitra about knitted fabrics.



Worknest Weight Automatic (WoWA)

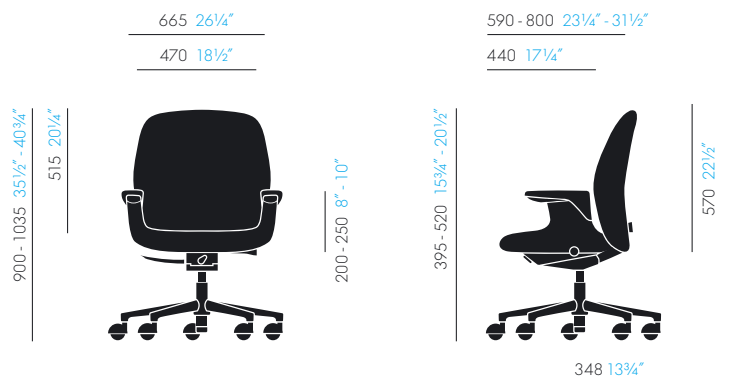
The new synchronous mechanics Worknest Weight Automatic (WoWA) automatically adjusts to the weight of the user when sitting on the seat. Thus it prevents wrong adjustments and you always sit correctly. If only the seat is used the backrest offers support. When you lean back the WoWA is activated, allowing dynamic sitting.



Technology/Material

- Seat/Backrest: Nylon carrier
- Upholstery: Polyurethane foam.
- Cover: Knitted fabric “NestKnit” in 8 colours.
- Armrest: Nylon armrest frames are covered with knitted fabric (one piece seat cover), armrest upholstery made of polyurethane integral foam in aubergine. The 5 colours of the armrest frames may be combined with all 8 material colours on customer request.
- Base frame: Aluminium pressure casting, powder coated, aubergine or silver (RAL 9006).
- Rollers: Double rollers according to EN12529 in basic black, load-dependent braking as standard (in Asia no brakes). As standard hard for fitted carpets or optionally soft for hard floors.
- Functions: Worknest Weight Automatic (WoWA) with automatic adjustment to the user weight, locking in upright position, fine adjustment of support: Height of seat, armrests and lumbar support is adjustable.

All measurements in mm and inches



Adjustments of Worknest



Adjustment of seat height

By lifting the lever on the front right-hand side underneath the seat and simultaneously sitting on and getting off, the seat may be adjusted to the correct height.



Adjustment of lumbar support

By twisting the adjustment knob at the back of the backrest the height of the integrated lumbar support may be adjusted.



Fine adjustment of backrest support

Alongside the synchronised mechanism which adjusts automatically to the user weight the required support of the backrest may be finely adjusted by turning the hand wheel on the left-hand side underneath the seat.



Locking of backrest

By tilting the lever on the front under the seat forward the backrest may be locked in the upright position. By pushing it back it may be released again so that the backrest or the synchronised mechanism are released again for dynamic sitting.



Integrated armrest adjustment

The armrests may be adjusted quickly and easily with a well positioned discreet button on top of the armrest and counteract tension of the shoulder muscles if adjusted correctly.



Adjustment of armrest

In order to move the armrest down you push the button on the cover. In order to move the armrests up all you need to do is pull up.

Vitra International AG, Birsfelden, CH | Vitra Ges.m.b.H., Wien, A | NV Vitra Belgium SA, Diegem, B | Vitra AG, Birsfelden, Showroom: Zürich, CH | Vitra koncept, s.r.o., Praha, CZ | Vitra GmbH, Weil am Rhein, Showroom: Frankfurt, D | Vitra Hispania S.A., Madrid, Showroom: Barcelona, E, Lisboa, P | Vitra, Paris, F | Vitra Ltd., London, GB | Vitra International AG, Budapest, HU | Vitra International AG, Mumbai/Bangalore, IN | Vitra (Nederland) B.V., Ouderkerk aan de Amstel, NL | Vitra Scandinavia AS, Oslo, N | Vitra International AG, Warszawa, PL | Vitra Furniture (Shanghai) Co., Ltd., Shanghai, PRC | Vitra Furniture Pte. Ltd., Singapore | Vitra Inc., New York, Culver City, San Francisco, Chicago, USA

vitra.® All intellectual property rights, such as trade marks, patents and copyrights are reserved. Nothing contained in this brochure may be reproduced without written permission.



