

# Banana-Board®

Adjustable Keyboards - Preconfigured Systems



WORKRITE®  
ERGONOMICS

## The preferred system of health and safety professionals

Considered an industry standard, the patented Banana-Board offers functionality combined with contemporary design. Enjoy the ultimate in comfort and style from our popular Pinnacle 2™ arm and low profile ball bearing track.



*Quickly convert to left-handed Mouse-Forward™ use*



*Pinnacle 2 Arm provides -15° to +10° tilt*



*Includes tilt indicator gauge for accurate tilt adjustment*



*Ergonomically designed knob provides easy tilt adjustment*

**Adjustability** – Equipped with a Pinnacle 2 adjustable keyboard arm with:

- No-knob, no-lever height adjustment
- Dual adjustable lift-assist springs provide optimal balance and smooth movement

**Adaptable** – The 1/2" thin molded high impact polyresin platform minimizes the distance between the forearm and thigh, for a greater range of ergonomic fit. The keyboard platform also features a built-in document holder and cord manager.

**Unmatched Flexibility** – The Banana-Board System fits the widest variety of office workstations. For demanding facility managers who want to avoid the hassle of supporting an extensive line of keyboard platforms for various workstation configurations, the Banana-Board is the ideal choice.

**Functional** – The Banana-Board System fits virtually all workstation shape and size requirements.

**Durability** – The Banana-Board System meets or exceeds the ANSI/BIFMA standards for performance, durability, and cycle testing, and is backed by WorkRite's Limited Lifetime Warranty.

*At WorkRite we believe that every body has a right to work comfortably and safely for maximum productivity. You can trust WorkRite - as 75% of Fortune 100 companies have - to create innovative solutions that flex to the diverse range of user needs, preferences and settings at work today.*

# Banana-Board

Adjustable Keyboards - Preconfigured Systems

The preferred system of health and safety professionals

Patented keyboard platform blends functionality with contemporary, high-tech design. Combined with our adjustable Pinnacle 2 arm and low-profile ball bearing track, for ultimate comfort and style.

**Keyboard Platform features:**

- Model UB-2180S-25 platform
- Mouse platform easily slides from side to side to accommodate left or right-handed mousing
- Features Mouse-Forward™ design for improved comfort
- Includes built-in document holder and cord management for keyboard and mouse
- Available with mouse palm support option
- "Mouse-Trap" keeps mouse in place
- Removable palm support on keyboard platform
- JelRite™ foam palm support optional

**Keyboard Arm features:**

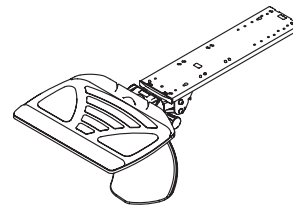
- Model 3170 Pinnacle 2 arm with 17" or 22" low profile ball bearing track
- Tilt range -15° to +10°
- Soft touch ergonomic knob for easy tilt control adjustment
- Dual counterbalance lift-assist springs
- Height range - flush to 6" below surface
- 360° swivel-easy positioning and storage
- Fully independent height and angle controls
- Low profile ball bearing track
- No-knob, no-lever Lift-N-Lock™
- Maximum knee clearance
- Optional no positive tilt kit restricts tilt from 0° to -15°, ordered separately

Available in black only

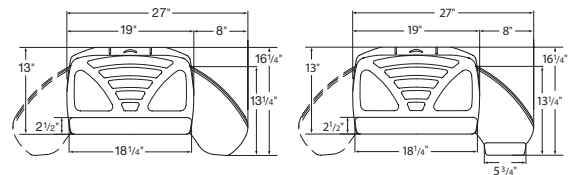
Limited lifetime warranty

Meets and exceeds ANSI/BIFMA standards

	Foam	Track Length	Weight	Model #
Without mouse palm support	Jel	22"	18	<b>2128-22J</b>
	Standard	22"	18	<b>2128-22</b>
	Jel	17"	16	<b>2128-17J</b>
	Standard	17"	16	<b>2128-17</b>
With mouse palm support	Jel	22"	18	<b>2133-22J</b>
	Standard	22"	18	<b>2133-22</b>
	Jel	17"	16	<b>2133-17J</b>
	Standard	17"	16	<b>2133-17</b>

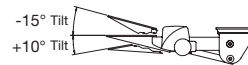
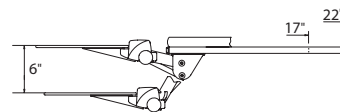


**Dimensions**

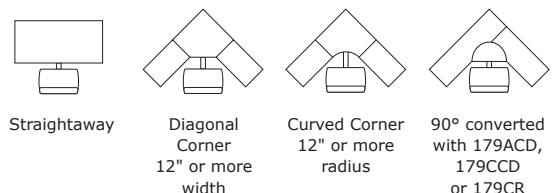


Without mouse palm support

With mouse palm support



**Desk Compatibility**



The following are federally registered trademarks of WorkRite Ergonomics: Banana-Board®, Stylized I®, and WorkRite Ergonomics®. The following are trademarks of WorkRite Ergonomics: Lift-n-Lock™, Mouse-Forward™, Optimizer™, Pinnacle 2™ and Quick Ship Logo™.